

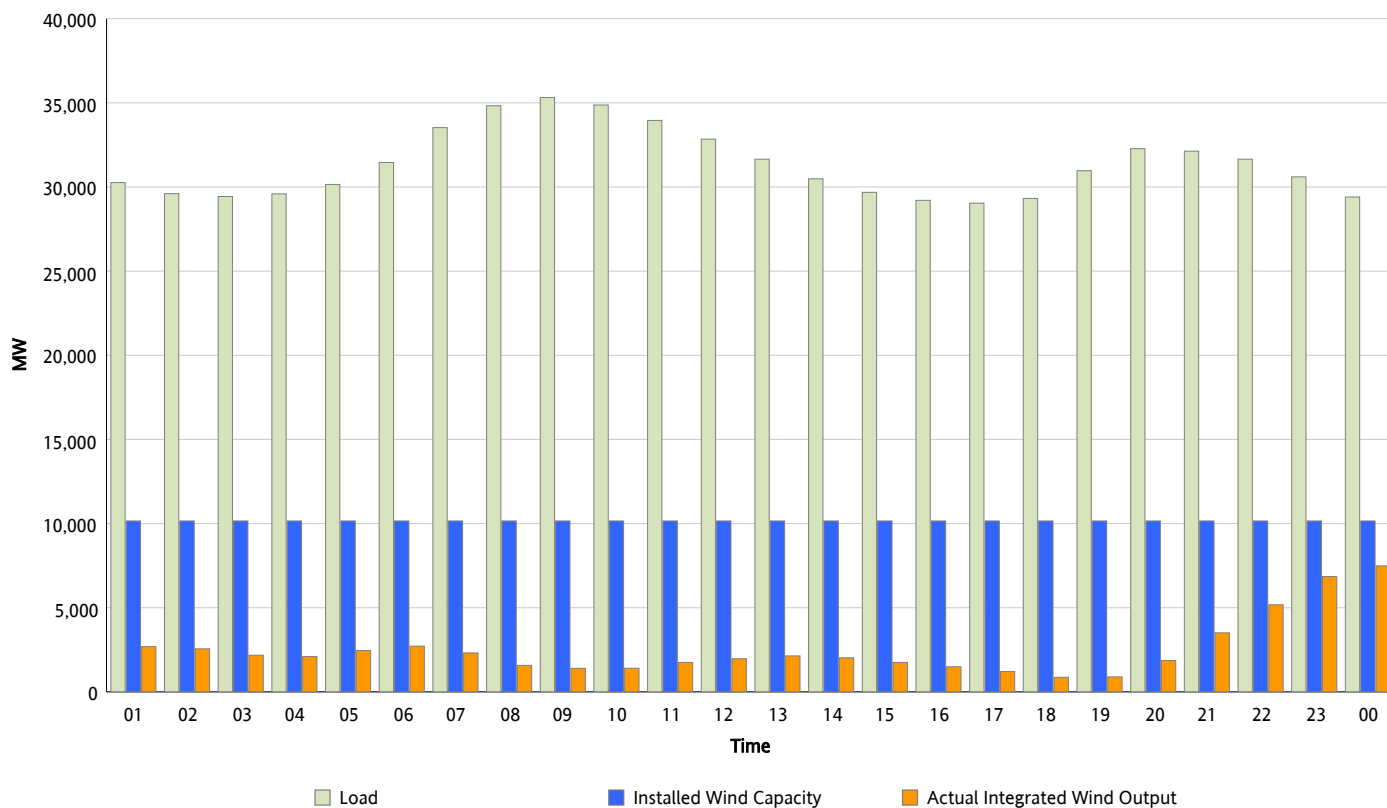


ERCOT Grid Operations

Wind Integration Report : 02/23/2013

Peak Load	35,317 MW
Load Peak Hour (HE)	09
Wind Over Peak	1,400 MW
Wind Record 02/09/13	9,481 MW
Max Wind Value*	7,583 MW
Wind Peak Time	23:55
Wind Integration %	26.17 %

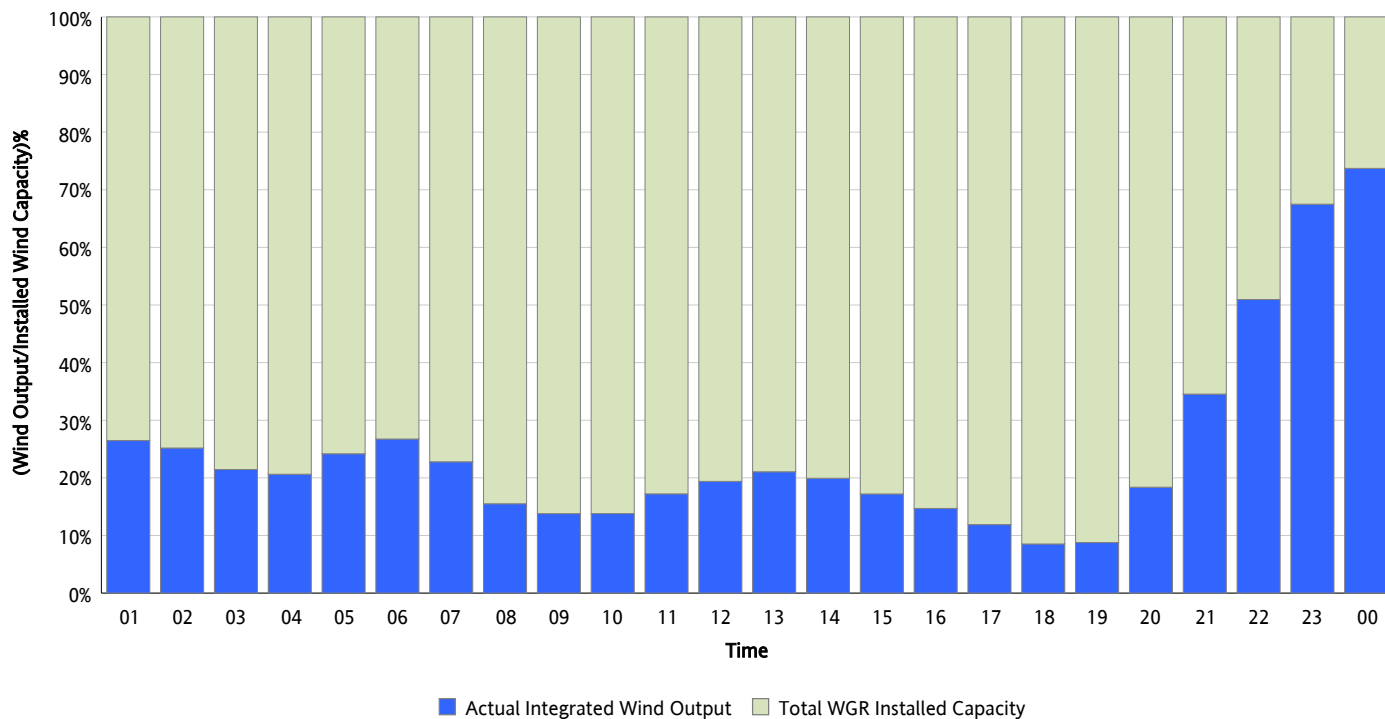
Hourly Average Actual Load vs. Actual Wind Output
02/23/2013



** Wind Record and Wind Max represent instantaneous values and the rest of the values are integrated over the hour*

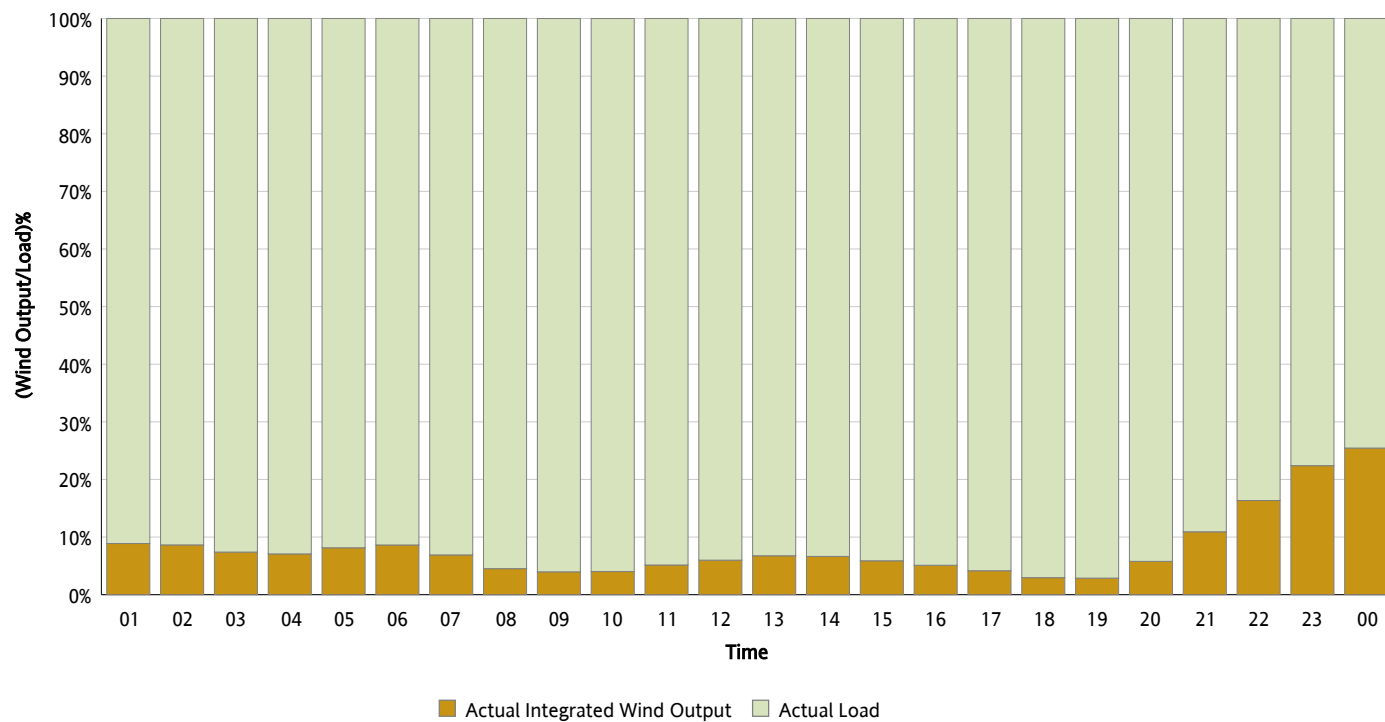
Actual Wind Output as a Percentage of the Total Installed Wind Capacity

02/23/2013



Actual Wind Output as a Percentage of the ERCOT Load

02/23/2013



ERCOT Load vs. Actual Wind Output

02/16/2013 - 02/23/2013

